



Created for Security

PoE Bullet Camera Quick Start Guide

www.annke.com

Hi, friend!

Thanks for choosing annke.
If there's anything we can help,
please feel free to reach us! We'll reply in 24H.



support@annke.com

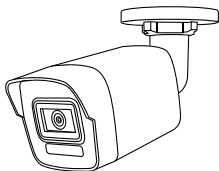


<http://help.annke.com>

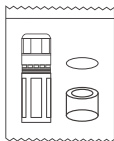
Contents

1. What's in the box	02
2. Camera introduction	03
3. Connection diagram	04
4. Set up the IP camera.....	05
5. Mount the IP camera	07
6. Waterproof the IP camera	09
7. Troubleshooting	10
8. Specifications	11
9. Regulatory Information	12
10. Safety Instruction.....	13

1. What's in the Box



①



②



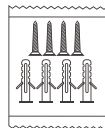
③



④



⑤

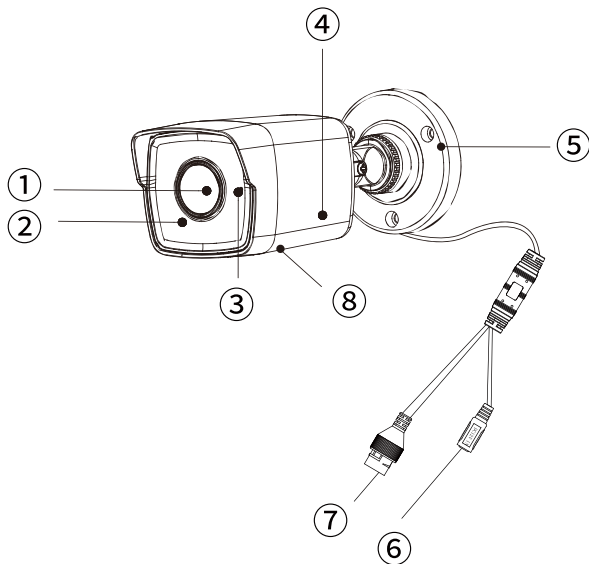


⑥

①	IP Camera	②	Waterproof Lid	③	Quick Start Guide
④	Surveillance Sign	⑤	Mounting Hole Template	⑥	Pack of Screws

NOTE: Camera and accessories may vary with different models, please prevail in kind.

2. Camera Introduction



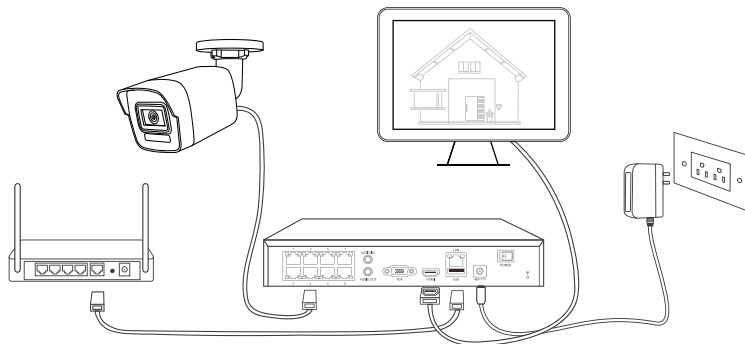
①	Lens	②	Front cover
③	Mic	④	Back cover
⑤	Mouting Base	⑥	Power Cord
⑦	Network Cable	⑧	Memory Card Slot

3. Connection diagram

Before using the IP camera, please follow the instructions below to connect your camera for testing and initial setup.

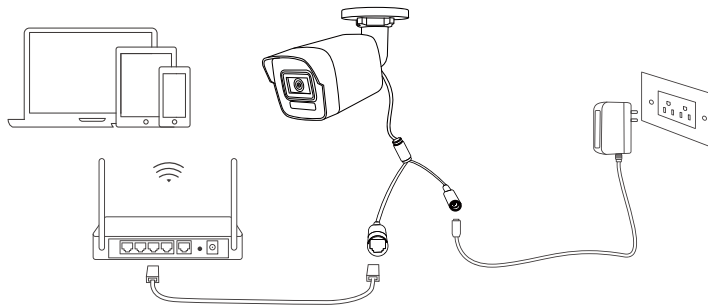
3.1 Work with ANNKE PoE NVR

1. Connect the IP camera to an ANNKE PoE NVR (not included) with an Ethernet cable.
2. Power on the PoE NVR, and connect the PoE NVR to a monitor.
3. The brand new camera will be activated automatically and output images.



3.2 Work independently

1. Connect the IP camera to a LAN port on your router/switch with an Ethernet cable.
2. Power on the IP camera with a DC 12V adapter or a PoE powering device such as PoE injector, PoE switch (not included in the package).
3. The IP camera can be directly added to the mobile APP ANNKE Vision. And it can be added to a NVR or third-party software after enable Open Network Video Interface protocol.



4. Set up the IP Camera

For the first-time access, you can activate the device via mobile app ANNKE Vision, web browser, SADP or desktop client software Guarding vision, or ANNKE DVR & NVR.

If you need remote view, you need to enable platform access and set a verification code, and add the device to a ANNKE vision app account.

4.1 On Smartphone

Scan the QR code below to download and install the **ANNKE Vision** App, or download it from Google Play or Apple Store, then register an APP account and add the device to you app account.



For iOS



For Android

4.2 On PC

Download and install SADP or Guarding vision software from our website:

<https://www.annke.com/pages/download-center>. All functions of the camera can be configured through the web page and Guarding vision software.

4.3 Preview through RTSP protocol

The correct description of RSTP for the IP camera is as below.

rtsp://username:password@IP: port/code/channel/sub type/av_stream

Fox example:

rtsp://admin:qwer1234@192.168.1.64:554/H265/ch 1/main/av_stream

4.4 Connect to ANNKE PoE NVR

Connect the IP camera to a NVR PoE port with a network cable. If the IP camera is inactivated or the activation password is same as NVR, the NVR will automatically add it successfully, or you can manually enter the correct password of the IP camera.

4.5 Connect to other brands recorder

Log in the IP camera via the web browser. **Go to Configuration-> Network->**

Advance Setting->Integration Protocol, check the Enable Open Network Video Interface(ONVIF) box. Click add to create an ONVIF account and password. The ONVIF account and password will be used when you add the IP camera to the third party NVR or DVR.

5. Mount the IP Camera

5.1 Installation instruction

- Make sure the power plug is firmly connected to the power socket.
Disconnected the power before you wire, install or dismantle the device.
- When the device is mounted on wall or ceiling, the device shall be firmly fixed.
- Do not aim the device towards any light sources. This may smudge the image and affect the durability of the sensor.
- Do not point the device towards a glass window. It may result in poor image quality because of the window glare by supplement lights, ambient lights or status lights.

- Do not place the device in a shaded area and point it towards a well-lit area. It may result in poor image quality.
- Do not install the device at places where rain and snow can hit the lens directly, and the device cannot be used underwater.
- Make sure that there is no reflective surface too close to the camera lens, it may reflect IR light back into the lens resulting in a poor image.
- Do not touch the lens with your fingers, and gently wipe the lens with a clean soft cloth if necessary.

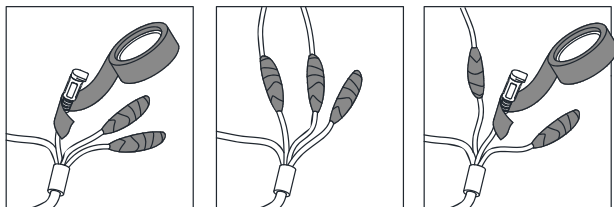
5.2 Mount the Camera to the Wall

This device support local storage up to 256GB, you can install a memory card if you need.

Ceiling or wall mounting, please refer to the following method steps.

1. Drill holes in accordance with the mounting hole template, use the expansion bolts included in the package if needed, install the base with the self-tapping screws included in the package.
2. Route the cables through the cable hole or the side opening. Mount the camera to the mounting plate and turn the camera clockwise to lock it tightly.
3. Power on the IP camera, check whether the image angle is suitable through the web page, monitor or APP, if not, please adjust the angle of the IP camera.

2. Use the waterproof tapes to wrap up all the cables.



7. Troubleshooting

7.1 Camera is not powering on

1. Make sure your camera is powered on properly. The IP camera should be powered by a PoE switch/injector, an ANNKE PoE NVR or a DC12V 1A power adapter.
2. If the camera is connected to a PoE device as listed above, connect it to another PoE port and check again.
3. Try again with another Ethernet cable.

If these won't work, contact ANNKE Support: support@annke.com

7.2 Camera is offline

1. Check whether the mobile phone network is normal, you can log in to the web page to check whether you can access the Internet.
 2. Make sure your camera is powered on, you can cover the camera lens to observe whether the fill light will light up.
 3. Make sure the network cable is OK, change another cable to test.
 4. Login the IP camera's web page, go to configuration-Network-Advanced Settings-Platform Access-Register Status, make sure the status is online.
 5. Sometimes you can reboot the camera by re-plug the power and wait a while, then refresh the device list in the app to see if the device status has changed.
- If these won't work, contact ANNKE Support: support@annke.com

8. Specifications

Night Vision: Up to 30 m

Built-in Microphone: Yes

On-board Storage: Built-in memory card slot up to 256 GB

Power: 12 VDC \pm 25% & PoE

Protection: IP67

Operating Condition: -30 °C to 60 °C(-22 °F to 140 °F)

For more specifications, visit <https://www.annke.com/>

9. Regulatory Information

FCC Compliance: This equipment has been tested and found to comply with the limits for a Class B digital device, pursuant to Part 15 of the FCC Rules. These limits are designed to provide reasonable protection against harmful interference in a residential installation.

FCC conditions

This device complies with Part 15 of FCC Rules. Operation is subject to the following two conditions: (1) this device may not cause harmful interference, and (2) this device must accept any interference received, including interference that may cause undesired operation.

EU Conformity Statement



ANNKE declares that this device is in compliance with the essential requirements and other relevant provisions of Directive 2014/30/EU, the RoHS Directive 2011/65/EU.



Products marked with this symbol cannot be disposed of as unsorted municipal waste in the European Union. For proper recycling, return this product to your local supplier upon the purchase of equivalent new equipment, or dispose of it at designated collection points.

Limited Warranty

This product comes with a 2-year limited warranty that is valid only if purchased from ANNKE. NOTE: We hope that you enjoy the new purchase. But if you are not satisfied with the product and plan to return, we strongly suggest that you reset the camera to factory default settings before returning.

10. Safety Instruction

Laws and Regulations

The device should be used in compliance with local laws, electrical safety regulations, and fire prevention regulations.

Electricity

In the use of the product, you must be in strict compliance with the electrical safety regulations of the nation and region. The equipment shall not be exposed to dripping or splashing and that no objects filled with liquids, such as vases, shall be placed on the equipment.

Emergency

If smoke, odor or noise rise from the device, turn off the power at once and unplug the power cable, then contact the device seller.

System Security

Please understand that you have the responsibility to configure all the passwords and other security settings about the device, and keep your user name and password.

Maintenance

If the product does not work properly, please contact support@annke.com. We shall not assume any responsibility for problems caused by unauthorized repair or maintenance.



Shenzhen Kean Digital co.,Ltd.

Address: Room 1001, Rujun Building, No.105 Center Road,
Bantian Street, Longgang District, Shenzhen, China.518000

Tech Support Email Address: support@annke.com

Tel: +1 833 717 0187 Free Call for US and CA, 7:00 am-7:30 pm, EST,Weekday
+ 44 8081966228 Free Call for UK 12 am - 8 pm, GMT, Weekday

UK	REP
----	-----

 THEMIS AR support ltd
85 Great Portland St, London, United Kingdom, W1W 7LT

EC	REP
----	-----

 THEMIS AR Unterstützung UG
Beedstrasse 54, In Dusseldorf, (40468), Deutschland

UK
CA



RoHS



Made in China